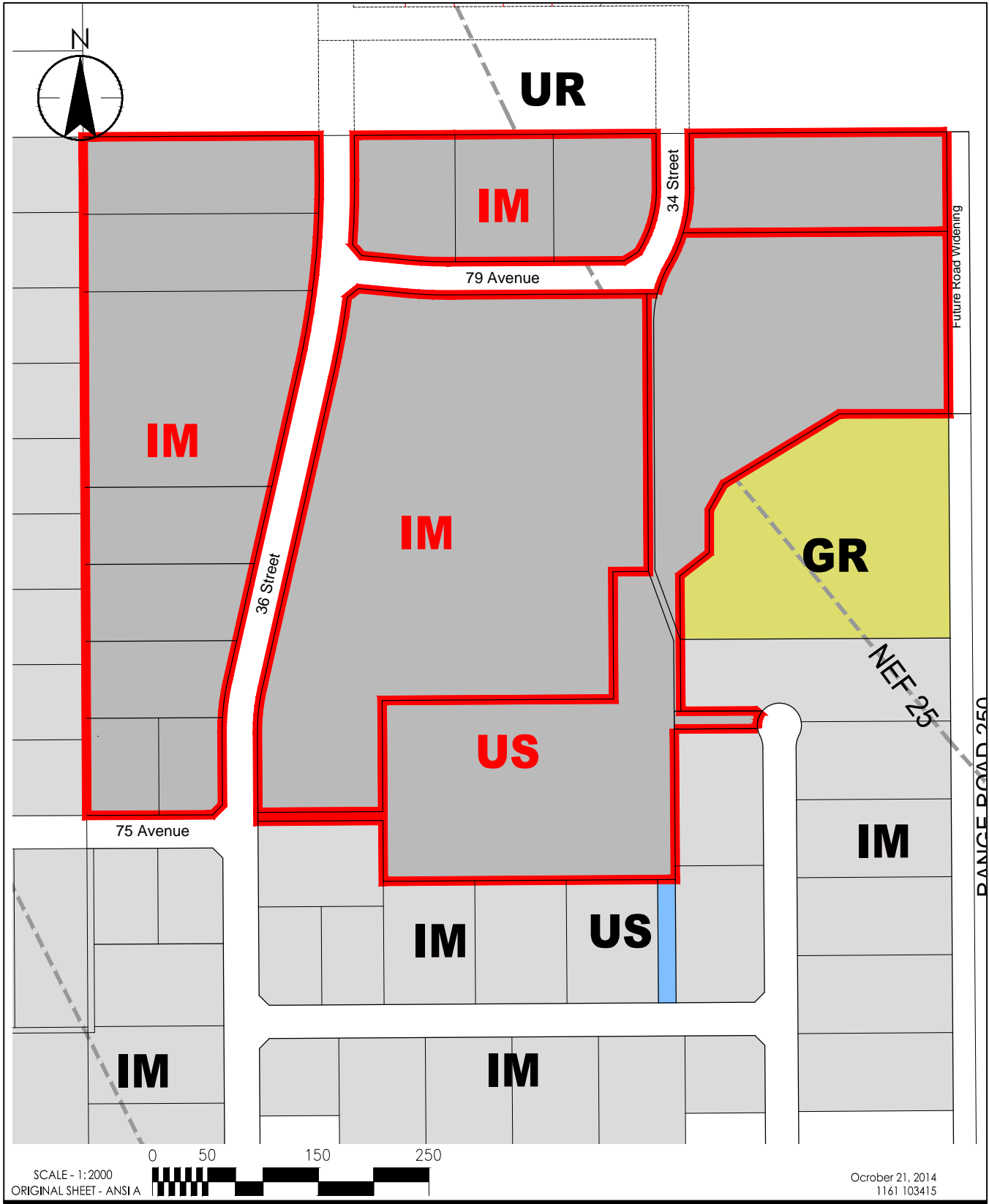


V:\1161\active\1161103415\drawing\Planning\Rezoning\sig 5-7-8\_RZ\_Leduc\_Industrial\_Park\_21oct2014.dwg



Client/Project

PLAN SHOWING EXISTING ZONING  
WITHIN THE LEDUC INDUSTRIAL PARK

Figure No.

Title

Stage 7 Approved Zoning



10160-112 Street  
Edmonton, AB T5K 2L6  
www.stantec.com