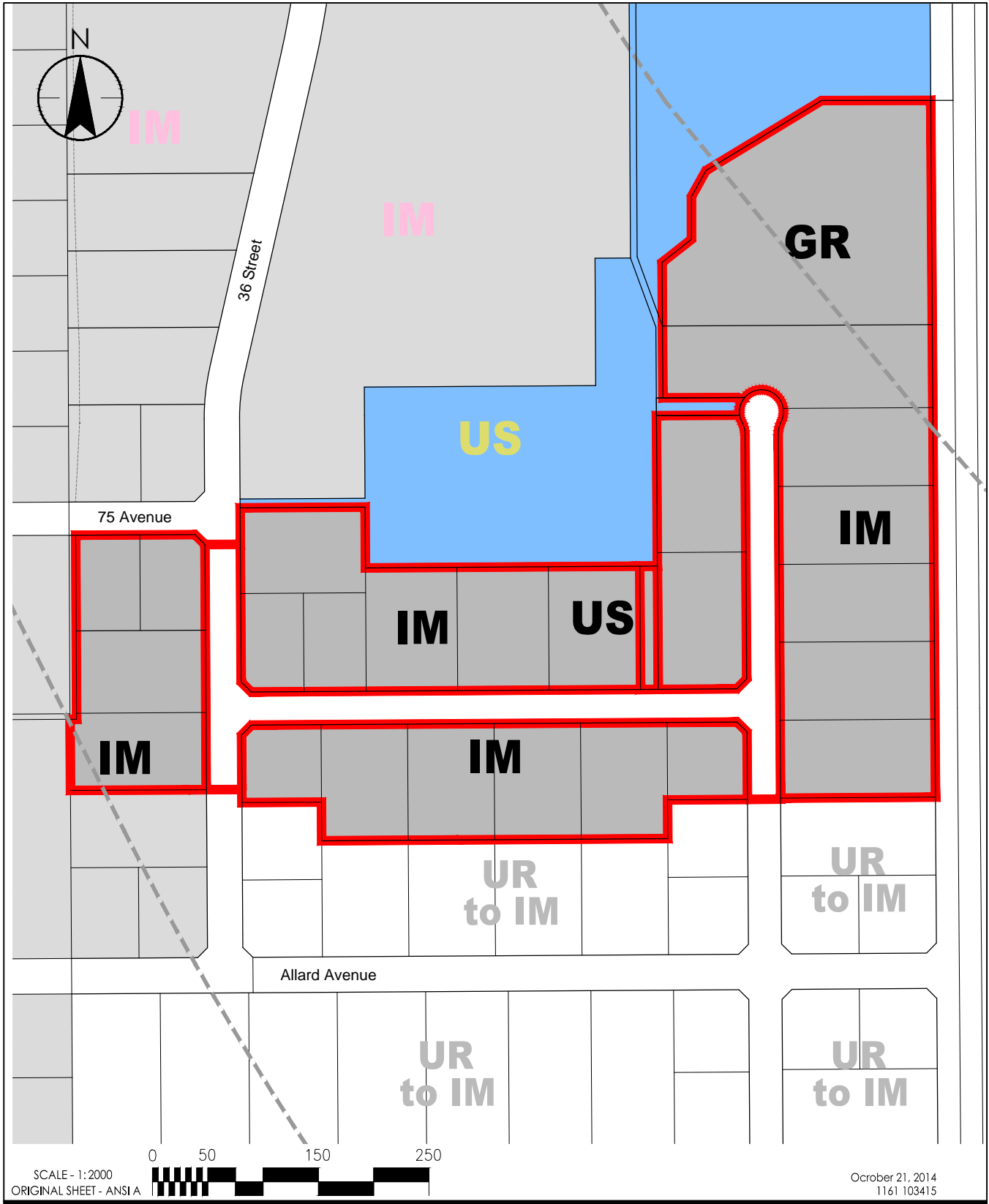


V:\1161\active\1161103415\drawing\Planning\Rezoning\sig 5-7-8\_RZ\_Leduc\_Industrial\_Park\_21oct2014.dwg



SCALE - 1:2000  
ORIGINAL SHEET - ANSI A

October 21, 2014  
1161 103415

Client/Project



10160-112 Street  
Edmonton, AB T5K 2L6  
www.stantec.com

PLAN SHOWING EXISTING ZONING  
WITHIN THE LEDUC INDUSTRIAL PARK  
Figure No.

Title  
Stage 8 Approved Zoning