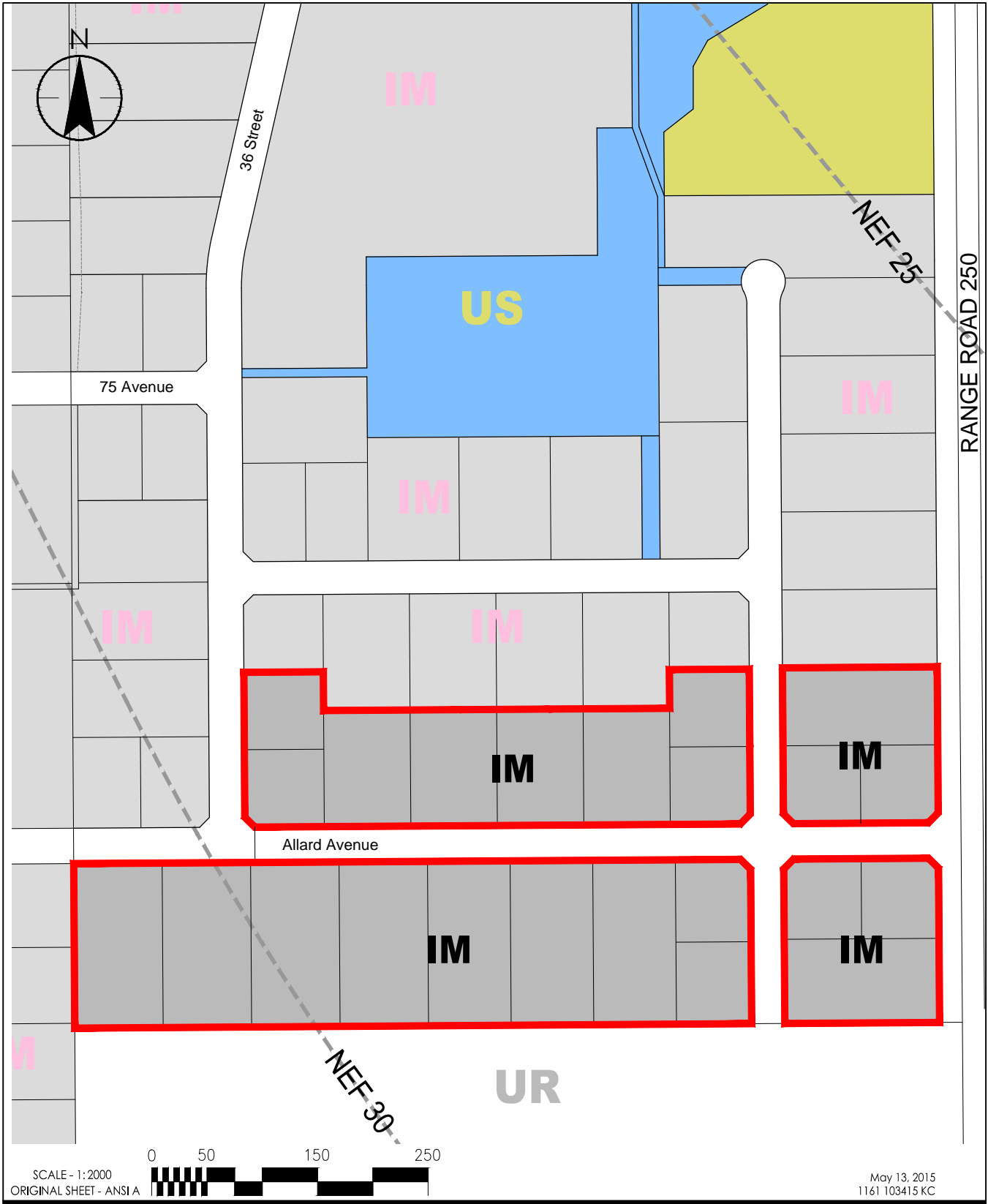


V:\1161\active\1161103415\drawing\Planning\Marketing\Marketing_RZ_Leduc_Industrial_Park_Stage9_13may2015.dwg



Client/Project

PLAN SHOWING EXISTING ZONING
WITHIN THE LEDUC INDUSTRIAL PARK

Figure No.

Title

Stage 9 Approved Zoning



10160-112 Street
Edmonton, AB T5K 2L6
www.stantec.com